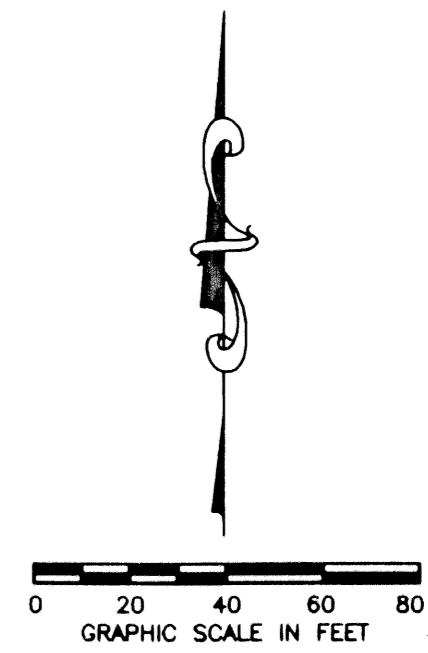


LE RIVAGE, A P.U.D.

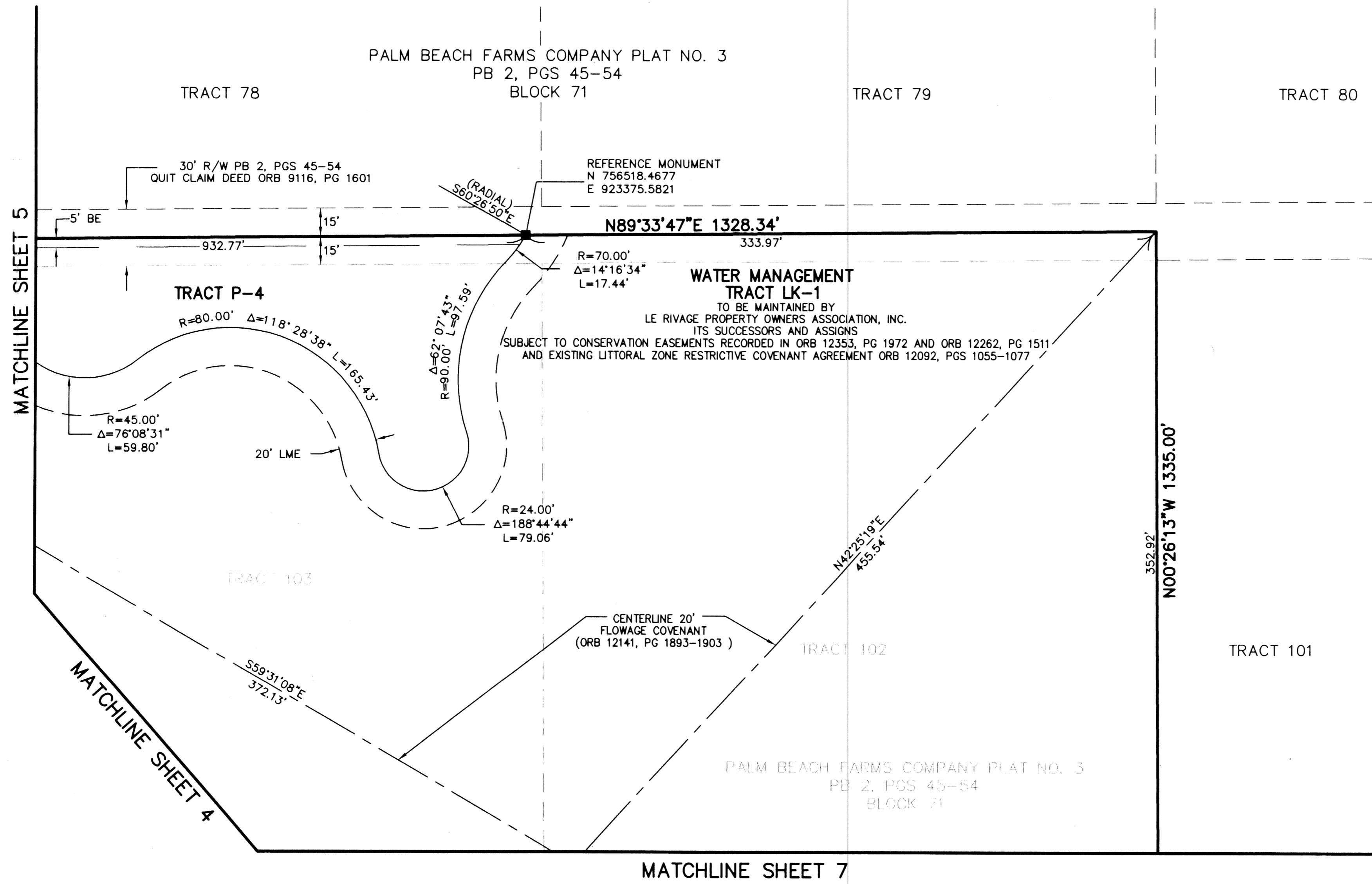
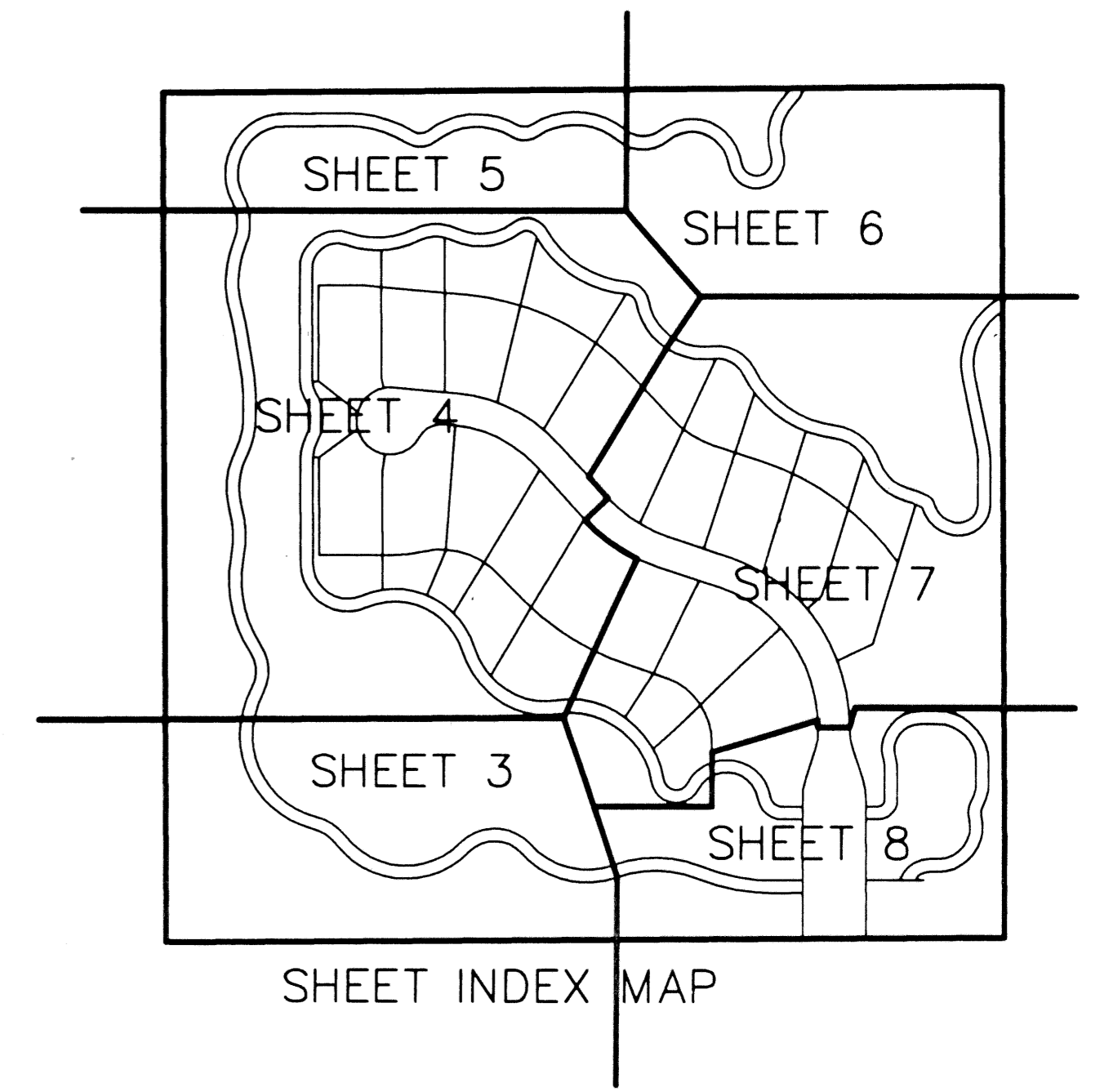
BEING A REPLAT OF TRACTS 102 THROUGH 109, BLOCK 71, TOGETHER WITH A PORTION OF THE ADJACENT ROADWAYS TO THE NORTH AND TO THE WEST, PALM BEACH FARMS COMPANY PLAT NO. 3, PLAT BOOK 2, PAGES 45 THROUGH 54 SECTION 32, TOWNSHIP 46 SOUTH, RANGE 42 EAST, AND SECTION 5, TOWNSHIP 47 SOUTH, RANGE 42 EAST, PALM BEACH COUNTY, FLORIDA
 JANUARY, 2001 SHEET 6 OF 8

63

STATE OF FLORIDA
 COUNTY OF PALM BEACH
 THIS PLAT WAS FILED FOR RECORD _____ DAY OF _____ AD, 2001 AND DULY RECORDED IN PLAT BOOK _____ ON PAGES _____ AND _____ BY:
 DOROTHY H. WILKEN, CLERK, D.C.



CIRCUIT COURT SEAL



LEGEND

BE	BUFFER EASEMENT
Δ	CENTRAL (DELTA) ANGLE
CH	CHORD
CL	CENTERLINE
D	DEVELOPMENT AREA
DE	DRAINAGE EASEMENT
L	ARC LENGTH
LAE	LIMITED ACCESS EASEMENT
LME	LAKE MAINTENANCE EASEMENT
LMAE	LAKE MAINTENANCE ACCESS EASEMENT
LSE	LIFT STATION EASEMENT
(NR)	NON-RADIAL
ORB	OFFICIAL RECORDS BOOK
P	PRESERVATION AREA
PB	PLAT BOOK
P.B.CO.	PALM BEACH COUNTY
PG(S)	PAGE(S)
R	RADIUS
R/W	RIGHT OF WAY
TCE	TEMPORARY CONSTRUCTION EASEMENT
UE	UTILITY EASEMENT
O/S	OFF SET
■	4" X 4" CONCRETE MONUMENT
○	SET LB 048
○	PERMANENT CONTROL POINT
○	SET LB 048
○	PALM BEACH COUNTY BRASS DISK

LE RIVAGE, A P.U.D.
 PAGE 63
 BLOCK 71
 SECTION 32, TOWNSHIP 46 SOUTH, RANGE 42 EAST
 PALM BEACH COUNTY, FLORIDA
 JANUARY 2001
 SHEET 6 OF 8

S:\sch\sch\wtf\dwg\WTFDRP05.dwg 03/06/01 04:52:58 PM EST
 CAD FILE: SCHWTFD\WTFDRP05

THIS INSTRUMENT WAS PREPARED BY DAVID L. SMITH, P.S.M. IN THE OFFICES OF MOCK, ROOS & ASSOCIATES, INC., 5720 CORPORATE WAY, WEST PALM BEACH, FLORIDA 33407.

SCALE:
 1"=40'
 P.A. NO.:
 99048.00
 DATE:
 JANUARY 2001
 DRAWING NO.
 46-42-32-5

MOCK • ROOS
 ENGINEERS • SURVEYORS • PLANNERS
 5720 Corporate Way, West Palm Beach, Florida 33407
 (561) 683-3113, fax 478-7248

LE RIVAGE, A P.U.D.
 BEING A REPLAT OF TRACTS 102 THROUGH 109, BLOCK 71, TOGETHER WITH A PORTION OF THE ADJACENT ROADWAYS TO THE NORTH AND TO THE WEST, PALM BEACH FARMS COMPANY, PLAT NO. 3, PLAT BOOK 2, PAGES 45 THROUGH 54 SECTION 32, TOWNSHIP 46 SOUTH, RANGE 42 EAST, AND SECTION 5, TOWNSHIP 47 SOUTH, RANGE 42 EAST, PALM BEACH COUNTY, FLORIDA